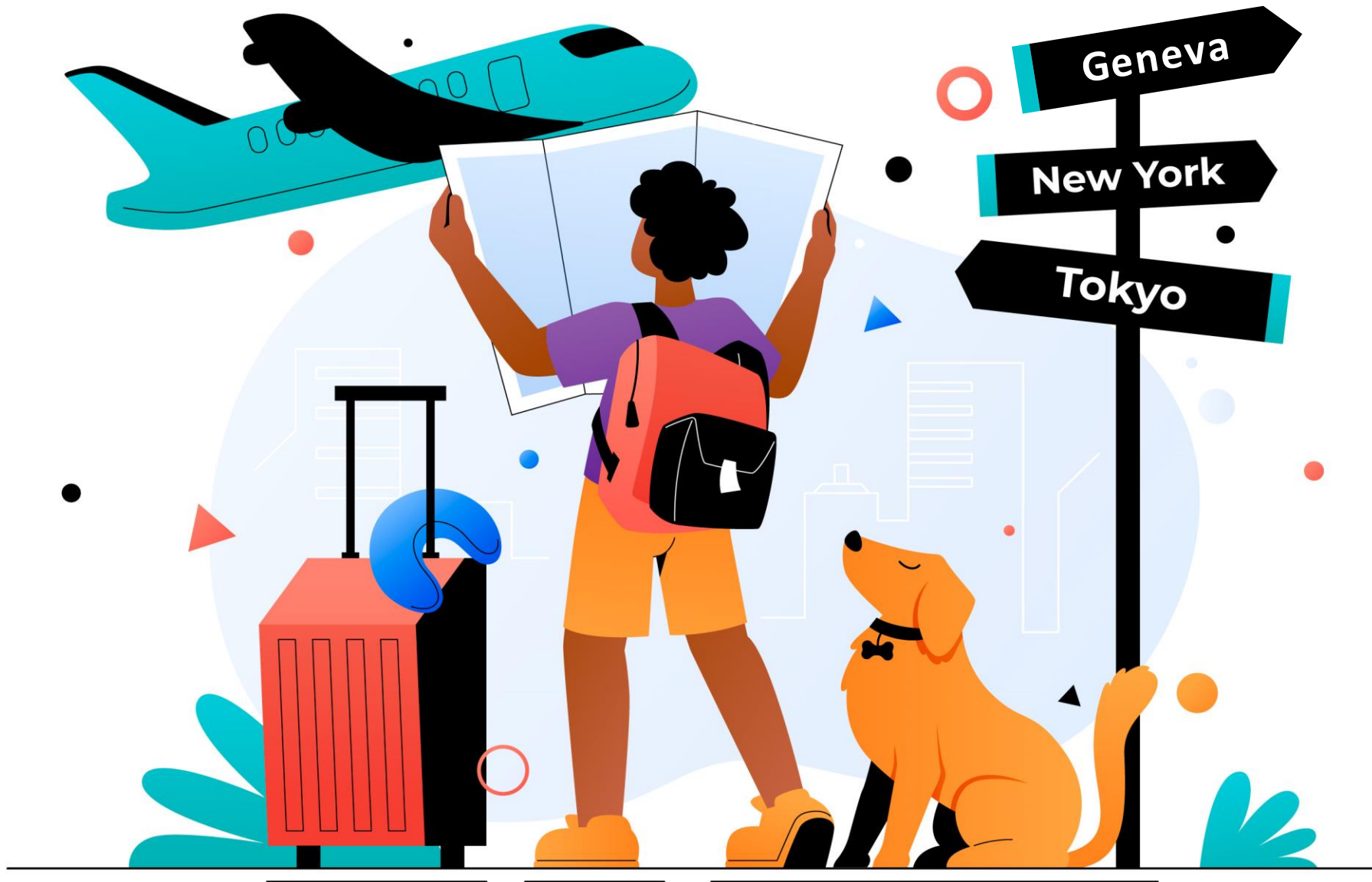


Across the border with a dog or cat







Pet Travel Check

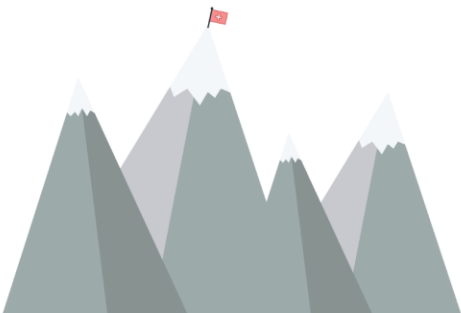
🕒 Survey started

Do you live in Switzerland?

 Yes, I live in Switzerland <input type="radio"/>	 No, I live somewhere else <input type="radio"/>
--	---

Next question

! Please select something





Pet Travel Check

🕒 Survey started

Do you live in Switzerland? ✓

No, I live somewhere else

Which reason applies to you?



I am moving to Switzerland
and want to bring my pet
with me.



I am going to holidays in
Switzerland with my pet.



Next question





Pet Travel Check

🕒 Survey started

Do you live in Switzerland? ✓

Yes, I live in Switzerland.

Which reason applies to you? ✓

I am coming back to Switzerland from holidays with my pet.

What animal are you bringing with you?



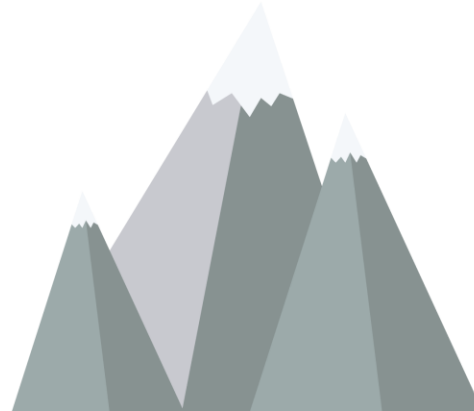
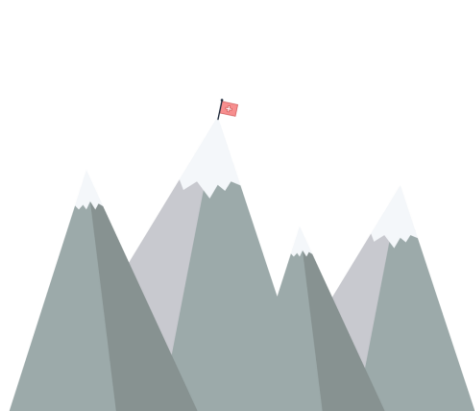
Cat



Dog



Next question





Pet Travel Check

🕒 Survey started

Do you live in Switzerland? ✓

Yes, I live in Switzerland.

Which reason applies to you? ✓

I am coming back to Switzerland from holidays with my pet.

What animal are you bringing with you? ✓

Dog

When was your animal born?

0-6

Less than 7 months ago

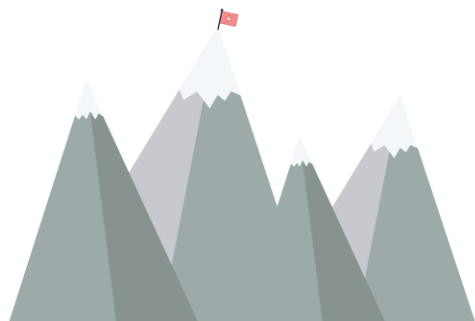


7+

More than 7 months ago



Next question





Pet Travel Check

🕒 Survey started

Do you live in Switzerland? ✓

Yes, I live in Switzerland.

Which reason applies to you? ✓

I am coming back to Switzerland from holidays with my pet.

What animal are you bringing with you? ✓

Dog

When was your animal born? ✓

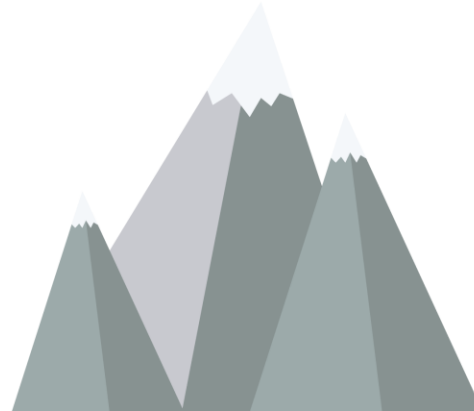
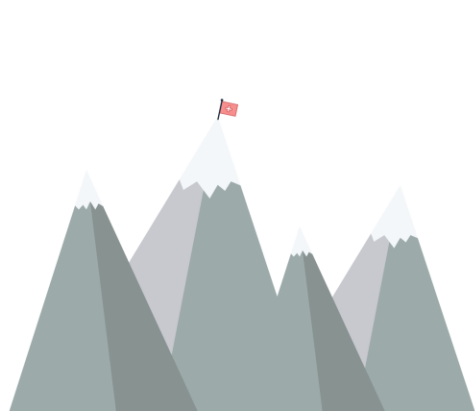
Less than 7 months ago

What country was the animal in?

Country

Please select a country

Next question





Less than 7 months ago

What country was the animal in?



United States of America

☆ Your results

Before your journey

Moving to Switzerland with your pet from the United States requires several steps to ensure a smooth entry for your pets:

- ✓ Microchip identification ✓
- ✓ Anti-Rabies Vaccination ✓
- ✓ Veterinary Certificate ✓
- ✓ Additional Regulations ✓
- ✓ Additional Information during Travel ✓
- ✓ Additional Information upon Arrival ✓

Remember, the most reliable source for regulations is the Ordinance on the Import, Transit, and Export of Pet Animals [SR 916.443.14 - Verordnung vom 28. November 2014...](#) | [Fedlex \(admin.ch\)](#)

This document contains the legally binding information you need to ensure a smooth trip with your furry friend.

